



The non-profit organisation “Jugend am Werk”

has been providing social services for more than 70 years, and runs two subsidiaries:

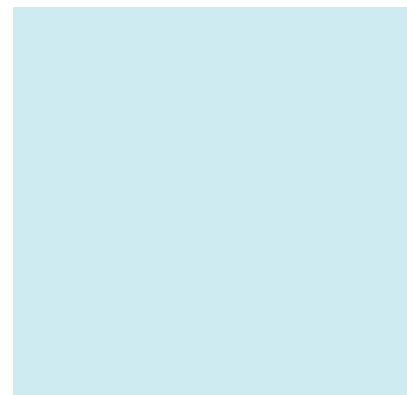
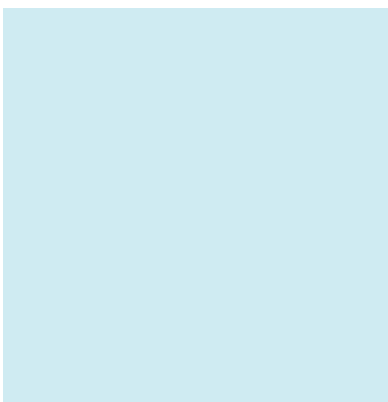
- “Jugend am Werk Bildungs:Raum GMBH”
- “Jugend am Werk Sozial:Raum GMBH”

Quality assurance

In order to ensure the high quality of services and the efficient use of subsidies, all processes in the integrated management system are clearly defined, documented and subject to continuous improvement.

Co-determination

Apprentice representatives and elected people with learning difficulties and disabilities in the workshop council and residential council are regularly involved in the decision-making process.



Housing models

People with learning difficulties and disabilities have a right to live independently and individually in their own four walls. Our housing models help these people to live their daily lives as independently as possible.

In the case of **accompanied living**, people with learning difficulties and disabilities live in their own flat. The exact extent of support provided by carers is agreed on an individual basis.

In **community living arrangements**, between eight and twelve residents that require more intensive care live together in a generously sized flat. They can furnish their own room as they like.

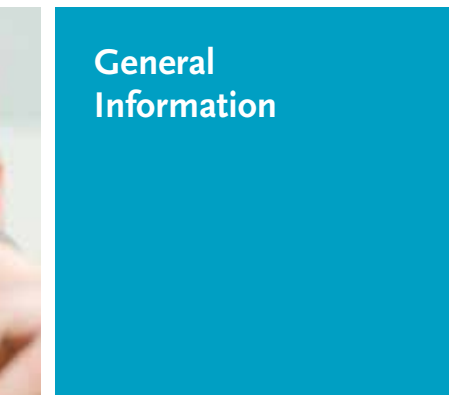
The **day care** offers individual support for people with learning difficulties and disabilities that are older than 65 years.

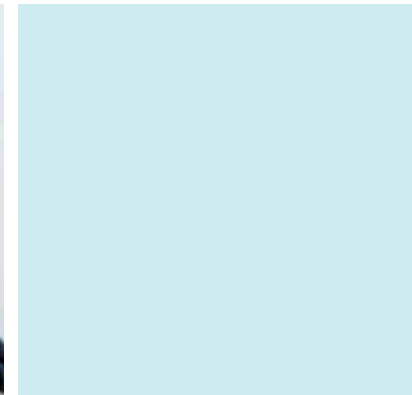
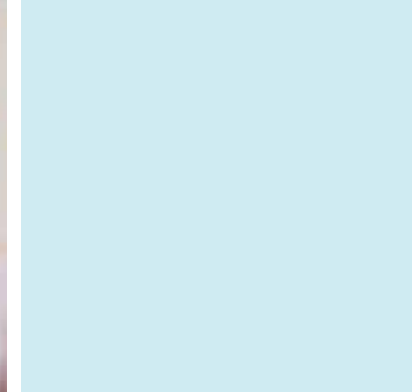


Children and youth community living

Our staff members are available around the clock in the community living quarters and responsible for all areas of life of the children and youths. They provide day-to-day support as well as ensuring academic and professional development. They also take care of medical issues, offering both security and stability. A key aspect here is arranging leisure activities together and going on regular trips out.

Furthermore, contact with parents and relatives is encouraged and supported in consultation with the Vienna Child and Youth Welfare Service – a major factor here is to facilitate a potential return to the family.





Vocational training

Young people can complete their entire apprenticeship at **vocational training centres** if they have been unable to get an apprenticeship on the open market and attend professional schools. They are also given support in their efforts to get an apprenticeship at a company.

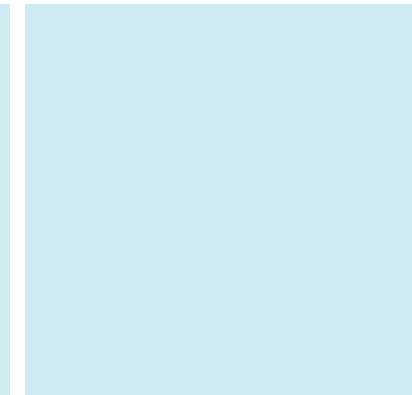
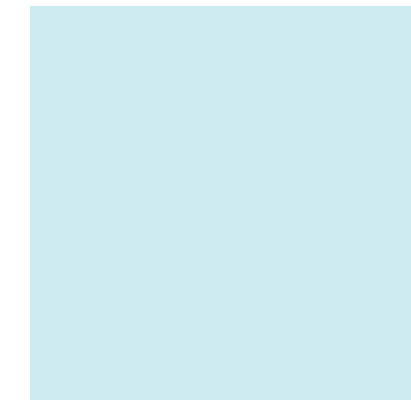
The **Extended Vocational Training** scheme offers disadvantaged young people additional support for their vocational training by extending the time needed for apprentice training by a maximum of two years, or to acquire a partial qualification.

The **STAR Production School** offers support for further training after completing compulsory education.

For adults who have not completed any vocational training, there are **modular training programmes**, **intensive specialist training** and the opportunity to prepare for the **final apprenticeship exam**.

Offers for companies

Companies can also book certain **training modules** or **company seminars** for apprentices and employees.



Supported employment

Our range of offers in the area of supported employment includes giving advice on matters such as career orientation and searching for apprenticeships/jobs to accompanying you directly to the place of work.

These are the objectives of the following projects, each with different focal areas:

Inklusive Lehrredaktion (*Inclusive Editors Training*), **Integrationsfachdienst Jobwärts** (*Jobwärts specialised integration service*), **Projekt Absprung** (*Jump project*), **Arbeitsassistentenz** (*Work assistance*) and **Job Coaching**.

The **vocational training assistant** provides support to and accompanies young people during their extended vocational training. Training in some areas of a profession enables young people to obtain **partial qualification** in different occupations.



Workshops and day structures

In addition to a wide range of offers in different areas of activities, supplementary offers provide an opportunity to develop social, cultural and practical life skills.

Qualification offers confer professional skills and people can familiarize themselves with the labour market by means of hourly or daily employment for a defined period of time.

Work orders are accepted in **working groups**, such as industrial production, craft or creative design. Furthermore, there are service areas such as courier services, cleaning or catering. Switching between different qualifications or moving directly into professional integration projects is supported if requested.

People with disabilities and higher care needs have access to **intensive care** that is specially tailored to personal development and care. The aim is to provide comprehensive support for each and every person to give them the greatest possible degree of self-determination and independence.

